

Additional Information

Tips For Observing Butterflies

Look for adult butterflies on flowers, on pavement and on damp dirt. Approach the butterflies slowly and try not to move your hands too quickly gesturing or pointing. Use your voice instead; it will not frighten the butterfly. Wait until everyone in your group has seen the butterfly before you try to photograph it. Look for butterfly eggs and caterpillars on the leaves and flowers of plants.

Tips for Photographing Butterflies

It is easier to photograph butterflies early in the morning when they are cool. Use a flash if possible to give greater detail. Use different angles to get different views of the wings. Start from a few feet away and move in closer with each photo.

Recommended Field Guides

- Glassberg. 1999. *Butterflies Through Binoculars, The East*. Oxford University Press.
- Brock and Kaufman. 2003 *Butterflies of North America*. Houghton Mifflin Company.
- Allen et al. 2005. *Caterpillars in the Field and Garden*. Oxford University Press.
- Wagner. 2005. *Caterpillars of Eastern North America*. Princeton University Press.

©2010 ATBI Group

Cannot be modified or reproduced except by
written permission of ATBI
Updated July 2010

About ATBI

This brochure was compiled and developed by the All Taxa Biodiversity Inventory (ATBI) group. ATBI is an on-going project in Tennessee State Parks and State Natural Areas. The goal of ATBI is to document all species in Tennessee State Parks, monitor long-term trends in specific taxonomic groups, and promote education about and preservation of all biodiversity with increased science and citizen education efforts. To access the ATBI database, go to www.state.tn.us/environment/parks/atbi.

For more information about ATBI, please contact David R. Hill, 7th Floor, L & C Tower, 401 Church St., Nashville, TN 37243. Email david.r.hill@tn.gov. Phone 615-253--2455.

Butterfly Organizations

North American Butterfly Association
Middle Tennessee Chapter
www.nabamidtn.org

North American Butterfly Association
Tennessee Valley Chapter
Email: wgh@tnaqua.org
Phone: (800) 262-0695 x 4056

Mountain Empire Butterfly Club
www.friendsofsteecreek.net Click on "Butterfly Club"

Butterflies and Moths of North America at www.butterfliesandmoths.org will give you a county by county butterfly species list.

Collecting of plants or animals in state parks and natural areas is prohibited. Please help preserve Tennessee's natural heritage by leaving plants and animals for others to enjoy.

BURGESS FALLS STATE NATURAL AREA

4000 Burgess Falls Drive
Sparta, TN 38583
Phone: (931) 432-5312
www.tn.gov/environment/parks/BurgessFalls/

TENNESSEE STATE PARKS
DIVISION OF RESOURCE
MANAGEMENT



All Taxa Biodiversity Inventory (ATBI)

Butterflies of Burgess Falls State Natural Area

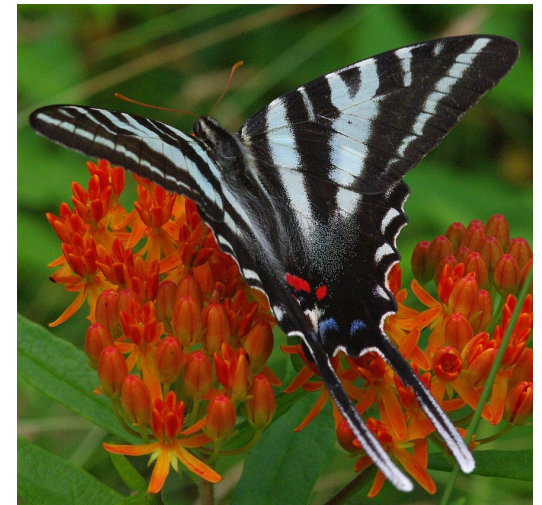


Photo © Marty Silver

Welcome to the wonderful world of butterflies at beautiful Burgess Falls State Natural Area! Of the approximate 135 species of butterflies in Tennessee, 32 have been documented in this park.

Above is a picture of a Zebra Swallowtail, the state butterfly of Tennessee. Mrs. Sherrill Charlton and her biology students at Gallatin High School led the way to name the Zebra Swallowtail the state butterfly by researching the species that have been documented in Tennessee. They chose the Zebra Swallowtail because it is abundant in the South, and the caterpillars only feed on the leaves of pawpaw (*Asimina triloba*), a native tree found throughout Tennessee.

The class contacted their state senator, Don Wright, who initiated a bill in January 1994. The Tennessee legislature discussed and passed the bill, and the Zebra Swallowtail became the official state butterfly of Tennessee on May 9, 1994.

