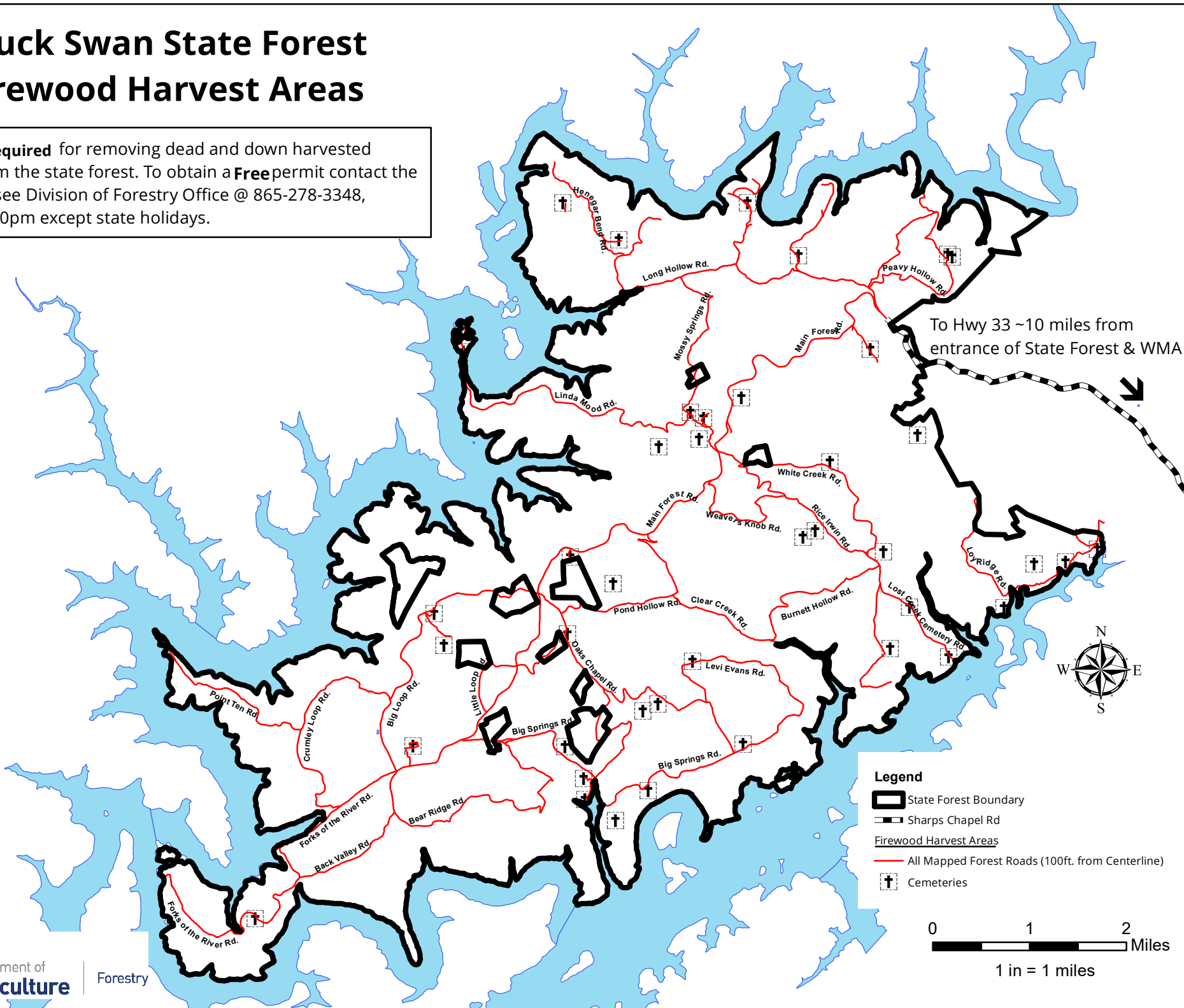


Chuck Swan State Forest Firewood Harvest Areas

A **permit is required** for removing dead and down harvested firewood from the state forest. To obtain a **Free** permit contact the local Tennessee Division of Forestry Office @ 865-278-3348, M-F 8am-4:30pm except state holidays.



To Hwy 33 ~10 miles from entrance of State Forest & WMA

- Legend**
- State Forest Boundary
 - Sharps Chapel Rd
 - Firewood Harvest Areas
 - All Mapped Forest Roads (100ft. from Centerline)
 - Cemeteries